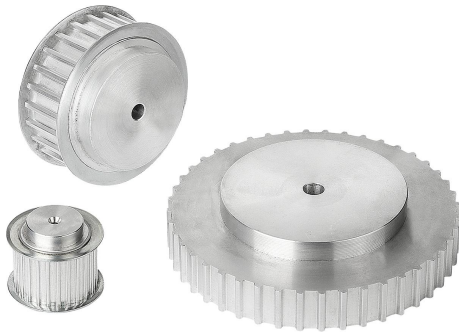


Item description/product images



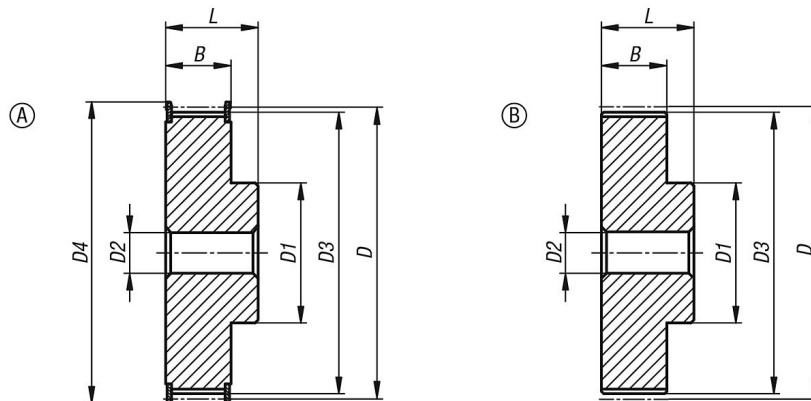
Description

Material:
Aluminium.
Rim flanges, steel.

Version:
Aluminium bright.
Steel electro zinc-plated.

Note:
Standard AT profile with metric pitch (trapezoidal toothing). At least one belt pulley must have a rim flange. The toothed belt pulleys have a centre bore or a pilot hole (this can vary due to manufacturing methods). For this reason, the dimension D2 max. given in the table is the maximum diameter of the bore with which the toothed belt pulleys are supplied. This pilot/centre bore can be amended by the customer to produce a reamed bore, reamed bore with keyway or a tapped hole. Alternatively, customers can also use bushes to reduce the bore diameter. The pulleys may be recessed on the front side.

Drawings



Overview of items

| Order No. | Profile | belt width | Form | No. of teeth | D | D1 | D2 max. | D3 | D4 | B | L |
|--------------|---------|------------|------|--------------|-------|----|---------|-------|----|----|----|
| 22003-051012 | AT5 | 10 | A | 12 | 19,01 | 10 | 6 | 17,85 | 23 | 15 | 21 |
| 22003-051014 | AT5 | 10 | A | 14 | 22,29 | 13 | 8 | 21,05 | 25 | 15 | 21 |
| 22003-051015 | AT5 | 10 | A | 15 | 23,88 | 16 | 10 | 22,65 | 28 | 15 | 21 |
| 22003-051016 | AT5 | 10 | A | 16 | 25,47 | 18 | 11 | 24,2 | 32 | 15 | 21 |
| 22003-051018 | AT5 | 10 | A | 18 | 28,65 | 20 | 12 | 27,4 | 32 | 15 | 21 |
| 22003-051019 | AT5 | 10 | A | 19 | 30,25 | 22 | 12 | 29 | 36 | 15 | 21 |
| 22003-051020 | AT5 | 10 | A | 20 | 31,83 | 23 | 14 | 30,6 | 36 | 15 | 21 |
| 22003-051022 | AT5 | 10 | A | 22 | 35,12 | 24 | 15 | 33,85 | 38 | 15 | 21 |
| 22003-051024 | AT5 | 10 | A | 24 | 38,21 | 26 | 15 | 37 | 42 | 15 | 21 |
| 22003-051025 | AT5 | 10 | A | 25 | 39,8 | 26 | 15 | 38,6 | 44 | 15 | 21 |
| 22003-051026 | AT5 | 10 | A | 26 | 41,47 | 26 | 16 | 40,2 | 44 | 15 | 21 |
| 22003-051027 | AT5 | 10 | A | 27 | 42,98 | 30 | 18 | 41,8 | 48 | 15 | 21 |
| 22003-051028 | AT5 | 10 | A | 28 | 44,62 | 32 | 18 | 43,35 | 48 | 15 | 21 |
| 22003-051030 | AT5 | 10 | A | 30 | 47,76 | 34 | 18 | 46,55 | 51 | 15 | 21 |
| 22003-051032 | AT5 | 10 | A | 32 | 50,94 | 36 | 22 | 49,7 | 54 | 15 | 21 |
| 22003-051036 | AT5 | 10 | A | 36 | 57,31 | 38 | 22 | 56,05 | 63 | 15 | 21 |
| 22003-051040 | AT5 | 10 | A | 40 | 63,66 | 40 | 23 | 62,45 | 66 | 15 | 21 |
| 22003-051042 | AT5 | 10 | A | 42 | 66,87 | 40 | 24 | 65,6 | 71 | 15 | 21 |
| 22003-051044 | AT5 | 10 | B | 44 | 70,07 | 45 | 26 | 68,8 | - | 15 | 21 |

Overview of items

| Order No. | Profile | belt width | Form | No. of teeth | D | D1 | D2 max. | D3 | D4 | B | L |
|--------------|---------|------------|------|--------------|--------|-----|---------|--------|-----|----|----|
| 22003-051048 | AT5 | 10 | B | 48 | 76,42 | 50 | 28 | 75,15 | - | 15 | 21 |
| 22003-051060 | AT5 | 10 | B | 60 | 95,52 | 65 | 35 | 94,25 | - | 15 | 21 |
| 22003-051612 | AT5 | 16 | A | 12 | 19,01 | 10 | 6 | 17,85 | 23 | 21 | 27 |
| 22003-051614 | AT5 | 16 | A | 14 | 22,29 | 13 | 8 | 21,05 | 25 | 21 | 27 |
| 22003-051615 | AT5 | 16 | A | 15 | 23,88 | 16 | 10 | 22,65 | 28 | 21 | 27 |
| 22003-051616 | AT5 | 16 | A | 16 | 25,47 | 18 | 11 | 24,2 | 32 | 21 | 27 |
| 22003-051618 | AT5 | 16 | A | 18 | 28,65 | 20 | 12 | 27,4 | 32 | 21 | 27 |
| 22003-051619 | AT5 | 16 | A | 19 | 30,25 | 22 | 12 | 29 | 36 | 21 | 27 |
| 22003-051620 | AT5 | 16 | A | 20 | 31,83 | 23 | 14 | 30,6 | 36 | 21 | 27 |
| 22003-051622 | AT5 | 16 | A | 22 | 35,12 | 24 | 15 | 33,85 | 38 | 21 | 27 |
| 22003-051624 | AT5 | 16 | A | 24 | 38,21 | 26 | 15 | 37 | 42 | 21 | 27 |
| 22003-051625 | AT5 | 16 | A | 25 | 39,8 | 26 | 15 | 38,6 | 44 | 21 | 27 |
| 22003-051626 | AT5 | 16 | A | 26 | 41,47 | 26 | 16 | 40,2 | 44 | 21 | 27 |
| 22003-051627 | AT5 | 16 | A | 27 | 42,98 | 30 | 18 | 41,8 | 48 | 21 | 27 |
| 22003-051628 | AT5 | 16 | A | 28 | 44,62 | 32 | 18 | 43,35 | 48 | 21 | 27 |
| 22003-051630 | AT5 | 16 | A | 30 | 47,76 | 34 | 18 | 46,55 | 51 | 21 | 27 |
| 22003-051632 | AT5 | 16 | A | 32 | 50,94 | 36 | 22 | 49,7 | 54 | 21 | 27 |
| 22003-051636 | AT5 | 16 | A | 36 | 57,31 | 38 | 22 | 56,05 | 63 | 21 | 27 |
| 22003-051640 | AT5 | 16 | A | 40 | 63,66 | 40 | 23 | 62,45 | 66 | 21 | 27 |
| 22003-051642 | AT5 | 16 | A | 42 | 66,87 | 40 | 24 | 65,6 | 71 | 21 | 27 |
| 22003-051644 | AT5 | 16 | B | 44 | 70,07 | 45 | 26 | 68,8 | - | 21 | 27 |
| 22003-051648 | AT5 | 16 | B | 48 | 76,42 | 50 | 28 | 75,15 | - | 21 | 27 |
| 22003-051660 | AT5 | 16 | B | 60 | 95,52 | 65 | 35 | 94,25 | - | 21 | 27 |
| 22003-052512 | AT5 | 25 | A | 12 | 19,01 | 10 | 6 | 17,85 | 23 | 30 | 36 |
| 22003-052514 | AT5 | 25 | A | 14 | 22,29 | 13 | 8 | 21,05 | 25 | 30 | 36 |
| 22003-052515 | AT5 | 25 | A | 15 | 23,88 | 16 | 10 | 22,65 | 28 | 30 | 36 |
| 22003-052516 | AT5 | 25 | A | 16 | 25,47 | 18 | 11 | 24,2 | 32 | 30 | 36 |
| 22003-052518 | AT5 | 25 | A | 18 | 28,65 | 20 | 12 | 27,4 | 32 | 30 | 36 |
| 22003-052519 | AT5 | 25 | A | 19 | 30,25 | 22 | 12 | 29 | 36 | 30 | 36 |
| 22003-052520 | AT5 | 25 | A | 20 | 31,83 | 23 | 14 | 30,6 | 36 | 30 | 36 |
| 22003-052522 | AT5 | 25 | A | 22 | 35,12 | 24 | 15 | 33,85 | 38 | 30 | 36 |
| 22003-052524 | AT5 | 25 | A | 24 | 38,21 | 26 | 15 | 37 | 42 | 30 | 36 |
| 22003-052525 | AT5 | 25 | A | 25 | 39,8 | 26 | 15 | 38,6 | 44 | 30 | 36 |
| 22003-052526 | AT5 | 25 | A | 26 | 41,47 | 26 | 16 | 40,2 | 44 | 30 | 36 |
| 22003-052527 | AT5 | 25 | A | 27 | 42,98 | 30 | 18 | 41,8 | 48 | 30 | 36 |
| 22003-052528 | AT5 | 25 | A | 28 | 44,62 | 32 | 18 | 43,35 | 48 | 30 | 36 |
| 22003-052530 | AT5 | 25 | A | 30 | 47,76 | 34 | 18 | 46,55 | 51 | 30 | 36 |
| 22003-052532 | AT5 | 25 | A | 32 | 50,94 | 36 | 22 | 49,7 | 54 | 30 | 36 |
| 22003-052536 | AT5 | 25 | A | 36 | 57,31 | 38 | 22 | 56,05 | 63 | 30 | 36 |
| 22003-052540 | AT5 | 25 | A | 40 | 63,66 | 40 | 23 | 62,45 | 66 | 30 | 36 |
| 22003-052542 | AT5 | 25 | A | 42 | 66,87 | 40 | 24 | 65,6 | 71 | 30 | 36 |
| 22003-052544 | AT5 | 25 | B | 44 | 70,07 | 45 | 26 | 68,8 | - | 30 | 36 |
| 22003-052548 | AT5 | 25 | B | 48 | 76,42 | 50 | 28 | 75,15 | - | 30 | 36 |
| 22003-052560 | AT5 | 25 | B | 60 | 95,52 | 65 | 35 | 94,25 | - | 30 | 36 |
| 22003-101615 | AT10 | 16 | A | 15 | 47,75 | 32 | 18 | 45,9 | 51 | 21 | 31 |
| 22003-101616 | AT10 | 16 | A | 16 | 50,93 | 35 | 20 | 49,05 | 54 | 21 | 31 |
| 22003-101618 | AT10 | 16 | A | 18 | 57,29 | 40 | 22 | 55,45 | 60 | 21 | 31 |
| 22003-101619 | AT10 | 16 | A | 19 | 60,48 | 44 | 22 | 58,6 | 66 | 21 | 31 |
| 22003-101620 | AT10 | 16 | A | 20 | 63,66 | 46 | 24 | 61,8 | 66 | 21 | 31 |
| 22003-101622 | AT10 | 16 | A | 22 | 70,03 | 52 | 28 | 68,15 | 75 | 21 | 31 |
| 22003-101624 | AT10 | 16 | A | 24 | 76,39 | 58 | 30 | 74,55 | 83 | 21 | 31 |
| 22003-101625 | AT10 | 16 | A | 25 | 79,58 | 60 | 30 | 77,7 | 83 | 21 | 31 |
| 22003-101626 | AT10 | 16 | A | 26 | 82,76 | 60 | 30 | 80,9 | 87 | 21 | 31 |
| 22003-101627 | AT10 | 16 | A | 27 | 85,95 | 60 | 30 | 84,1 | 91 | 21 | 31 |
| 22003-101628 | AT10 | 16 | A | 28 | 89,13 | 60 | 30 | 87,25 | 93 | 21 | 31 |
| 22003-101630 | AT10 | 16 | A | 30 | 95,49 | 60 | 30 | 93,65 | 97 | 21 | 31 |
| 22003-101632 | AT10 | 16 | A | 32 | 101,86 | 65 | 32 | 100 | 106 | 21 | 31 |
| 22003-101636 | AT10 | 16 | A | 36 | 114,59 | 70 | 35 | 112,75 | 119 | 21 | 31 |
| 22003-101640 | AT10 | 16 | A | 40 | 127,32 | 80 | 40 | 125,45 | 131 | 21 | 31 |
| 22003-101644 | AT10 | 16 | B | 44 | 140,06 | 88 | 46 | 138,2 | - | 21 | 31 |
| 22003-101648 | AT10 | 16 | B | 48 | 152,78 | 95 | 48 | 150,95 | - | 21 | 31 |
| 22003-101660 | AT10 | 16 | B | 60 | 190,98 | 110 | 60 | 189,1 | - | 21 | 31 |
| 22003-102515 | AT10 | 25 | A | 15 | 47,75 | 32 | 18 | 45,9 | 51 | 30 | 40 |
| 22003-102516 | AT10 | 25 | A | 16 | 50,93 | 35 | 20 | 49,05 | 54 | 30 | 40 |
| 22003-102518 | AT10 | 25 | A | 18 | 57,29 | 40 | 22 | 55,45 | 60 | 30 | 40 |

Overview of items

| Order No. | Profile | belt width | Form | No. of teeth | D | D1 | D2 max. | D3 | D4 | B | L |
|--------------|---------|------------|------|--------------|--------|-----|---------|--------|-----|----|----|
| 22003-102519 | AT10 | 25 | A | 19 | 60,48 | 44 | 22 | 58,6 | 66 | 30 | 40 |
| 22003-102520 | AT10 | 25 | A | 20 | 63,66 | 46 | 24 | 61,8 | 66 | 30 | 40 |
| 22003-102522 | AT10 | 25 | A | 22 | 70,03 | 52 | 28 | 68,15 | 75 | 30 | 40 |
| 22003-102524 | AT10 | 25 | A | 24 | 76,39 | 58 | 30 | 74,55 | 83 | 30 | 40 |
| 22003-102525 | AT10 | 25 | A | 25 | 79,58 | 60 | 30 | 77,7 | 83 | 30 | 40 |
| 22003-102526 | AT10 | 25 | A | 26 | 82,76 | 60 | 30 | 80,9 | 87 | 30 | 40 |
| 22003-102527 | AT10 | 25 | A | 27 | 85,95 | 60 | 30 | 84,1 | 91 | 30 | 40 |
| 22003-102528 | AT10 | 25 | A | 28 | 89,13 | 60 | 30 | 87,25 | 93 | 30 | 40 |
| 22003-102530 | AT10 | 25 | A | 30 | 95,49 | 60 | 30 | 93,65 | 97 | 30 | 40 |
| 22003-102532 | AT10 | 25 | A | 32 | 101,86 | 65 | 32 | 100 | 106 | 30 | 40 |
| 22003-102536 | AT10 | 25 | A | 36 | 114,59 | 70 | 35 | 112,75 | 119 | 30 | 40 |
| 22003-102540 | AT10 | 25 | A | 40 | 127,32 | 80 | 40 | 125,45 | 131 | 30 | 40 |
| 22003-102544 | AT10 | 25 | B | 44 | 140,06 | 88 | 46 | 138,2 | - | 30 | 40 |
| 22003-102548 | AT10 | 25 | B | 48 | 152,78 | 95 | 48 | 150,95 | - | 30 | 40 |
| 22003-102560 | AT10 | 25 | B | 60 | 190,98 | 110 | 60 | 189,1 | - | 30 | 40 |
| 22003-103218 | AT10 | 32 | A | 18 | 57,29 | 40 | 22 | 55,45 | 60 | 37 | 47 |
| 22003-103219 | AT10 | 32 | A | 19 | 60,48 | 44 | 22 | 58,6 | 66 | 37 | 47 |
| 22003-103220 | AT10 | 32 | A | 20 | 63,66 | 46 | 24 | 61,8 | 66 | 37 | 47 |
| 22003-103222 | AT10 | 32 | A | 22 | 70,03 | 52 | 28 | 68,15 | 75 | 37 | 47 |
| 22003-103224 | AT10 | 32 | A | 24 | 76,39 | 58 | 30 | 74,55 | 83 | 37 | 47 |
| 22003-103225 | AT10 | 32 | A | 25 | 79,58 | 60 | 30 | 77,7 | 83 | 37 | 47 |
| 22003-103226 | AT10 | 32 | A | 26 | 82,76 | 60 | 30 | 80,9 | 87 | 37 | 47 |
| 22003-103227 | AT10 | 32 | A | 27 | 85,95 | 60 | 30 | 84,1 | 91 | 37 | 47 |
| 22003-103228 | AT10 | 32 | A | 28 | 89,13 | 60 | 30 | 87,25 | 93 | 37 | 47 |
| 22003-103230 | AT10 | 32 | A | 30 | 95,49 | 60 | 30 | 93,65 | 97 | 37 | 47 |
| 22003-103232 | AT10 | 32 | A | 32 | 101,86 | 65 | 32 | 100 | 106 | 37 | 47 |
| 22003-103236 | AT10 | 32 | A | 36 | 114,59 | 70 | 35 | 112,75 | 119 | 37 | 47 |
| 22003-103240 | AT10 | 32 | A | 40 | 127,32 | 80 | 40 | 125,45 | 131 | 37 | 47 |
| 22003-103244 | AT10 | 32 | B | 44 | 140,06 | 88 | 46 | 138,2 | - | 37 | 47 |
| 22003-103248 | AT10 | 32 | B | 48 | 152,78 | 95 | 48 | 150,95 | - | 37 | 47 |
| 22003-103260 | AT10 | 32 | B | 60 | 190,98 | 110 | 60 | 189,1 | - | 37 | 47 |